



KINGS MILLS RD (16,262 VPD)



RATH EQUITY, LTD.

6,014 - 14,525 SF
KINGS ISLAND
OFFICE SPACE
FOR LEASE

5300 KINGS ISLAND DRIVE
MASON, OH 45040

SUBURBAN
INTERIOR
PARKING

PROPERTY OVERVIEW

Kings Island Office Park is a 159,421 square-foot office building. The location of the Kings Island Office Park is exceptional for a building of its size. Just turns off of Interstate-71, the property offers large bays and leasing spaces for Cincinnati's growing businesses. The Kings Island Office park was built in 1984 and renovated in 2000.

LOCATION OVERVIEW

Mason, Ohio, is one of Cincinnati's fastest-growing markets. Situated within Warren County, Mason is known for its strong retail corridor, impressive demographics, and international business representation, including companies such as Atos, Gensuite, Ensemble Health Partners, Proctor & Gamble and Luxottica.

SQ FT
14,525
Contiguous SF

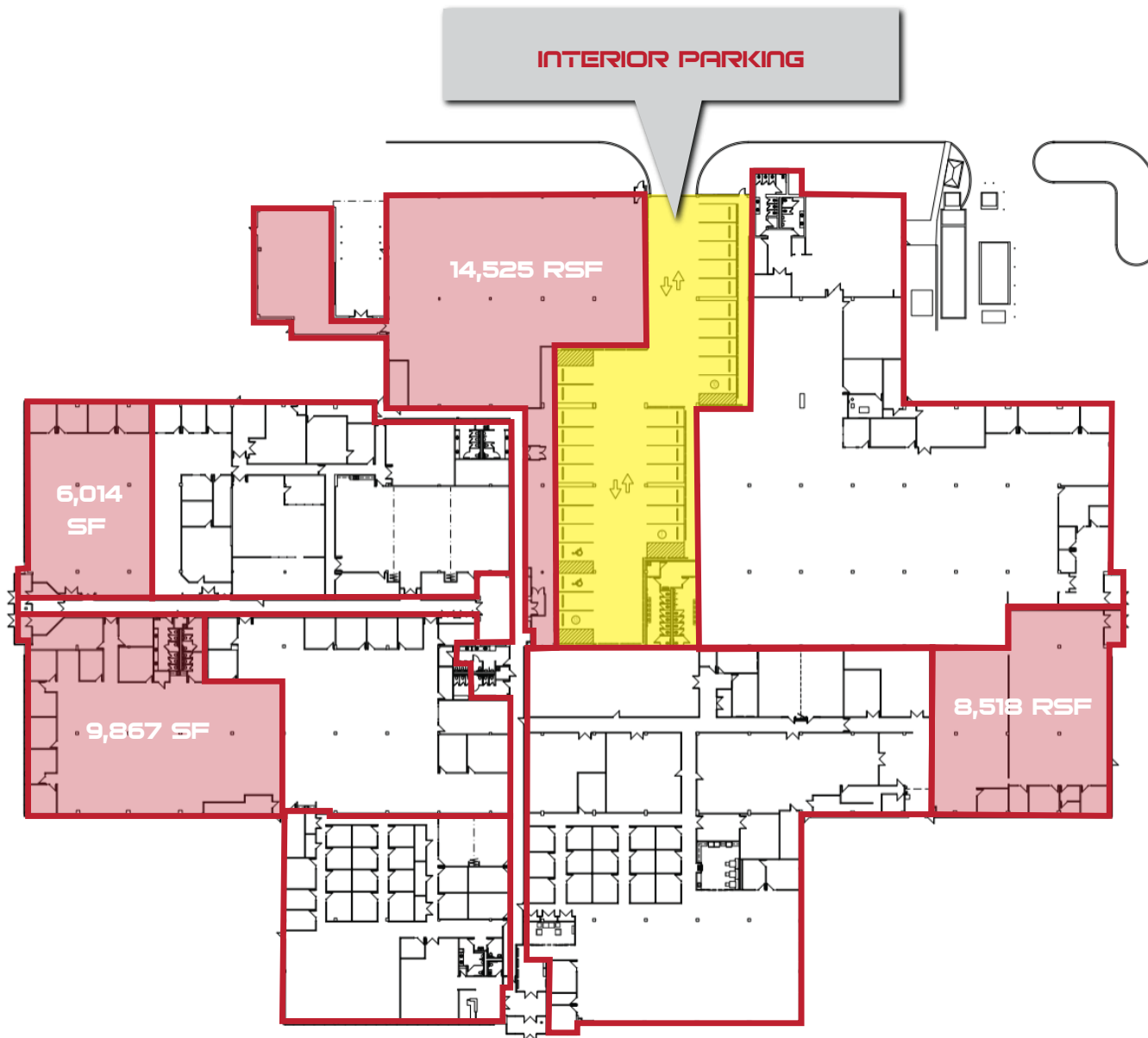
TOTAL SQ FT
6,014 SF to
14,525 SF

LOT SIZE
15.20 Acres

LEASE HIGHLIGHTS

- > 159,421 square-foot office building
- > Large bays & leasing spaces
- > Renovated in 2000
- > Spaces Ranging from 6,014 SF to 14,525 SF
- > 933 Parking Spaces (10/1,000 SF Leased)
- > Immediate proximity to Kings Island Amusement Park, Great Wolf Lodge, and multiple new developments
- > Easy Access to I-71 and 30 minutes to the NKY/Cincinnati International Airport
- > Well positioned within the largest city in Warren County

FLOOR PLAN



VIDEO OVERVIEWS

PROPERTY OVERVIEW VIDEO



AREA HOTSPOT MAP



AERIAL VIEWS



EXTERIOR BUILDING



INTERIOR PHOTOS



MAPS & AERIALS



AREA DEVELOPMENT

MERCY HEALTH HOSPITAL OPENING LATE 2023

Construction planning continues for a new \$156 million, 60-bed hospital and medical office complex to be built in Mason by Mercy Health–Cincinnati. The hospital was granted a variance this week by Warren County for access points to the new hospital on Kings Island Drive. A new traffic signal will be located about 550 feet south of Kings Mills Drive, which is much less than the 1,760 feet that is required by the plan. It will consist initially of a 156,000-square-foot hospital and a 45,000-square-foot medical office building with 611 parking spaces total.

A later phase will add 45,000 square feet plus 3,500 square feet of medical offices and 321 parking spaces, according to documents submitted by Mercy Health. The new health care campus will feature an Emergency Department; a Level II Cath Lab; 60 inpatient beds; eight ICU beds; four operating rooms; create 275 new jobs over five years; and provide convenient access to full-service comprehensive care for Warren County residents, Mercy Health officials said.





Kings Mill Rd

King Ave



Kings Island

30-acre site that will be home to a 156,900 square foot Mercy Health hospital and medical office complex.



SPECIFICATIONS



LOCATION

| | |
|---------------|--|
| Address | 5300 Kings Island Dr |
| Building Size | 159,971 SF |
| Parking | 933 Spaces (10 Spaces/1,000 SF Leased) |
| Site Size | 15.20 Acres |
| Access | Kings Island Drive off of I-71 |

FEATURES

| | |
|---------------------|----------------------|
| Number of Buildings | One (1) |
| Number of Units | Six (6) |
| Roof | Flat |
| Year Build | 1982; Renovated 2000 |
| Number of Floors | One (1) |
| Elevators | None |

AMENITIES

| | |
|-----------------------|----------------------|
| Conferencing Facility | Yes |
| Parking | 10 Spaces / 1,000 SF |

ZONING

| | |
|-----------------|-----------|
| Municipality | Mason, OH |
| Income Tax Rate | 1.12% |

BUILDING SYSTEMS

| | |
|-----------------|------------------|
| HVAC | Roof Mounted |
| Fire Protection | Sprinkler System |

DEMOGRAPHICS

| 2022 SUMMARY | 1 MILE | 3 MILES | 5 MILES |
|-------------------------------|-----------|-----------|-----------|
| Population | 2,238 | 38,253 | 108,189 |
| Households | 779 | 14,492 | 39,807 |
| Families | 563 | 10,264 | 28,649 |
| Average Household Size | 2.87 | 2.63 | 2.70 |
| Owner Occupied Housing Units | 633 | 11,515 | 31,632 |
| Renter Occupied Housing Units | 145 | 2,978 | 8,176 |
| Median Age | 40.2 | 38.9 | 38.3 |
| Median Household Income | \$116,543 | \$108,902 | \$107,823 |
| Average Household Income | \$160,286 | \$150,721 | \$149,381 |

| 2027 SUMMARY | 1 MILE | 3 MILES | 5 MILES |
|-------------------------------|-----------|-----------|-----------|
| Population | 2,343 | 40,005 | 112,307 |
| Households | 816 | 15,209 | 41,475 |
| Families | 586 | 10,714 | 29,745 |
| Average Household Size | 2.87 | 2.63 | 2.69 |
| Owner Occupied Housing Units | 669 | 12,169 | 33,230 |
| Renter Occupied Housing Units | 146 | 3,039 | 8,246 |
| Median Age | 41.3 | 39.7 | 39.1 |
| Median Household Income | \$121,551 | \$124,870 | \$121,927 |
| Average Household Income | \$172,290 | \$166,962 | \$166,866 |



108,189

5-Mile
Population



\$107,823

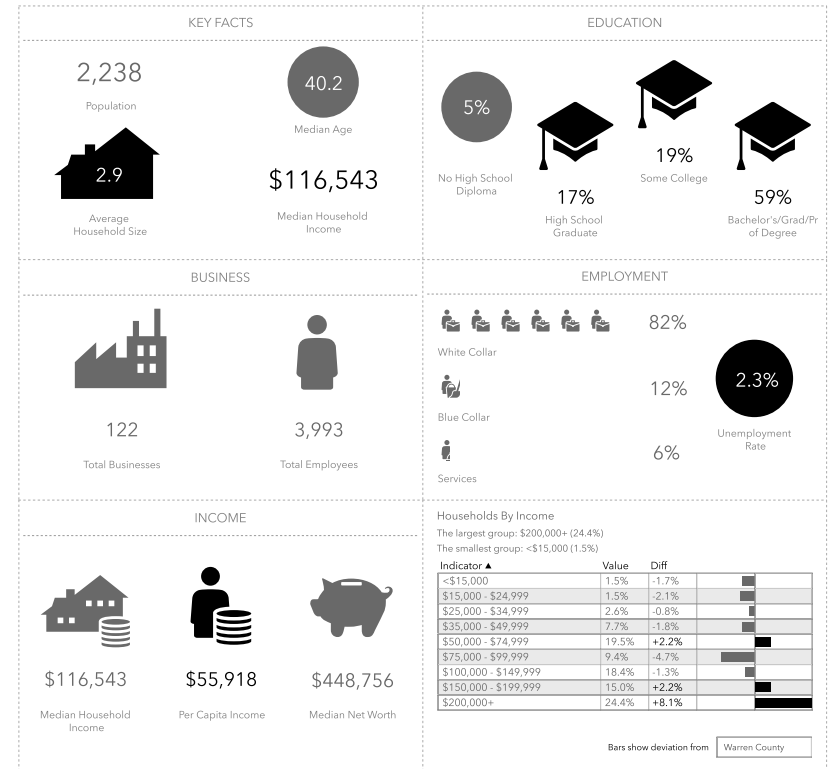
5-Mile Median
Household Income



39,807

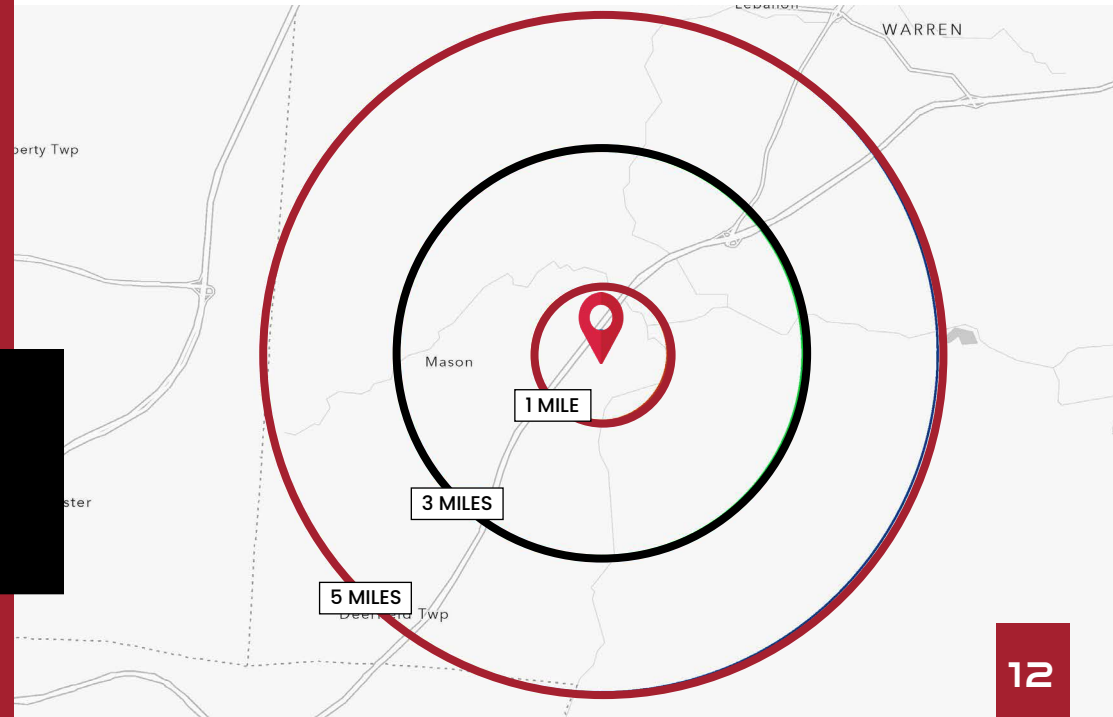
5-Mile
Households

1 MILE KEY FACTS



This infographic contains data provided by Esri, Esri and Data Axle. The vintage of the data is 2021, 2026.

© 2021 Esri



CONFIDENTIALITY DISCLAIMER

PRESENTED
EXCLUSIVELY BY:



ADAM RATH | BROKER
adam@rathequity.com
513.888.8669
rathequity.com

All materials and information received or derived from Rath Equity, its directors, officers, agents, advisors, affiliates and/or any third party sources are provided without representation or warranty as to completeness, veracity, or accuracy, condition of the property, compliance or lack of compliance with applicable governmental requirements, developability or suitability, financial performance of the property, projected financial performance of the property for any party's intended use or any and all other matters.

Neither Rath Equity, its directors, officers, agents, advisors, or affiliates makes any representation or warranty, express or implied, as to accuracy or completeness of the any materials or information provided, derived, or received. Materials and information from any source, whether written or verbal, that may be furnished for review are not a substitute for a party's active conduct of its own due diligence to determine these and other matters of significance to such party. Rath Equity will not investigate or verify any such matters or conduct due diligence for a party unless otherwise agreed in writing.

EACH PARTY SHALL CONDUCT ITS OWN INDEPENDENT INVESTIGATION AND DUE DILIGENCE.

Any party contemplating or under contract or in escrow for a transaction is urged to verify all information and to conduct their own inspections and investigations including through appropriate third party independent professionals selected by such party. All financial data should be verified by the party including by obtaining and reading applicable documents and reports and consulting appropriate independent professionals. Rath Equity makes no warranties and/or representations regarding the veracity, completeness, or relevance of any financial data or assumptions. Rath Equity does not serve as a financial advisor to any party regarding any proposed transaction.

All data and assumptions regarding financial performance, including that used for financial modeling purposes, may differ from actual data or performance. Any estimates of market rents and/or projected rents that may be provided to a party do not necessarily mean that rents can be established at or increased to that level. Parties must evaluate any applicable contractual and governmental limitations as well as market conditions, vacancy factors and other issues in order to determine rents from or for the property. Legal questions should be discussed by the party with an attorney. Tax questions should be discussed by the party with a certified public accountant or tax attorney. Title questions should be discussed by the party with a title officer or attorney. Questions regarding the condition of the property and whether the property complies with applicable governmental requirements should be discussed by the party with appropriate engineers, architects, contractors, other consultants and governmental agencies. All properties and services are marketed by Rath Equity in compliance with all applicable fair housing and equal opportunity laws.