



# THE MONTGOMERY

**379 SF TO ±13,000 SF AVAILABLE**

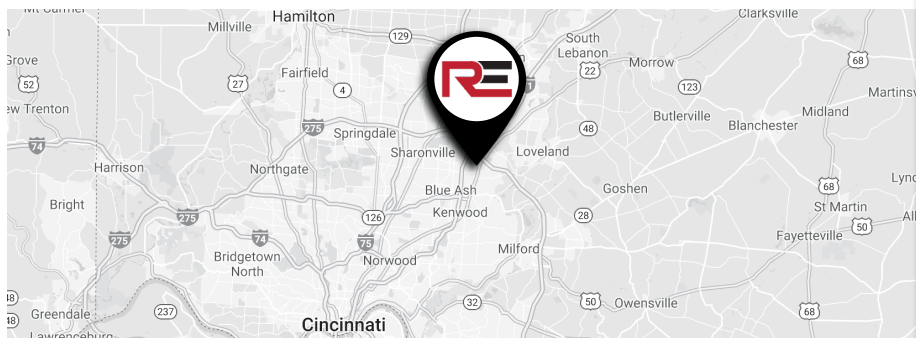
10700 Montgomery Road | Montgomery, OH 45242



Short Term Options  
Turn-Key Suites  
(Fresh Paint & Carpet)

## LEASE OVERVIEW:

**\$14.95 + Electric | New Ownership**



## LOCATION DETAILS

Located conveniently near two major Cincinnati highways (I-275 and I-71), 10700 Montgomery Road is ideal for businesses looking to expand within the Montgomery community. The 60,599 square foot building is available for lease, with the option of smaller rentals within the building. From office suites to full business operations, 10700 Montgomery Road can accommodate a range of commercial leasing needs for businesses large and small.



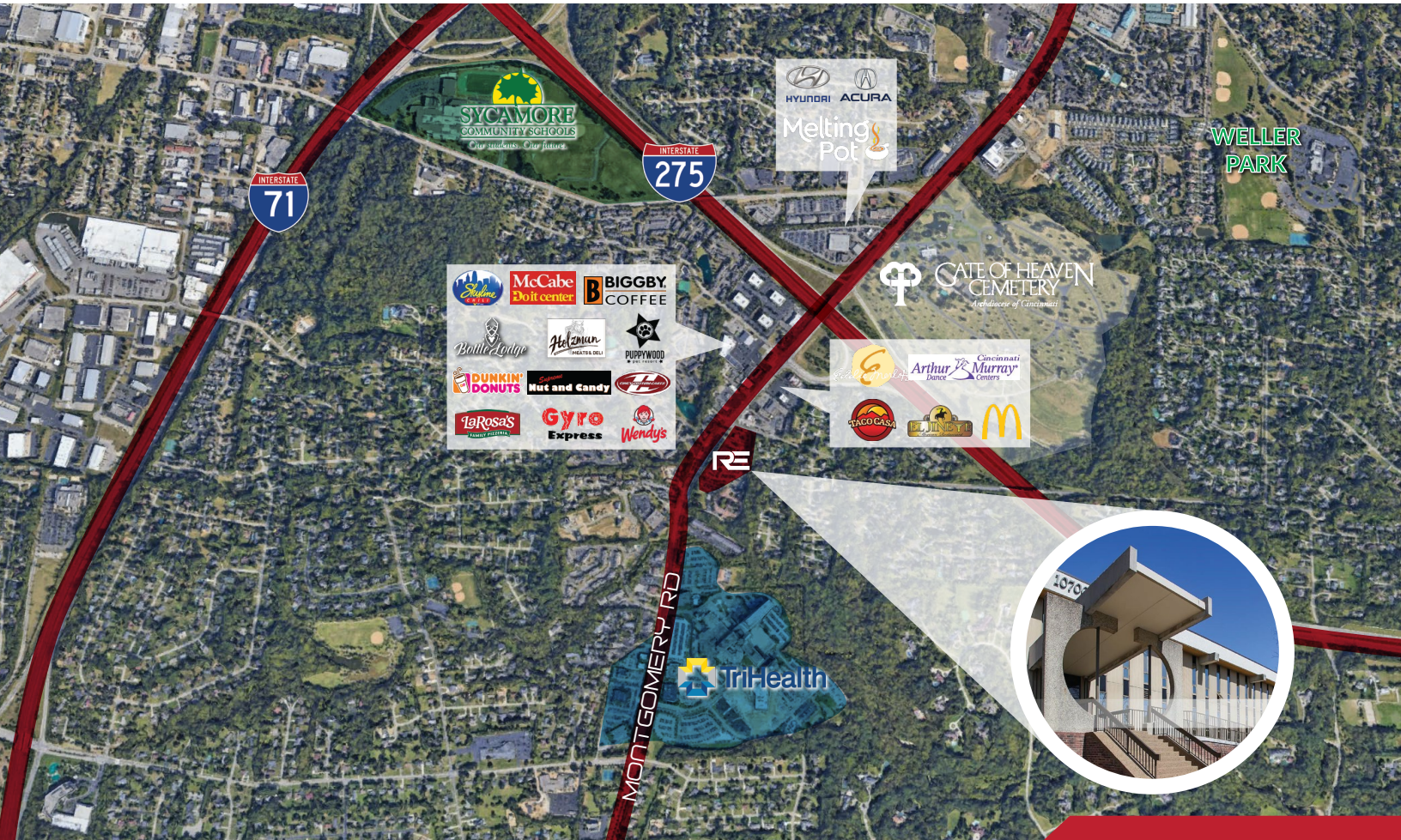
## PROPERTY FEATURES

- ✓ 850 SF to ±13,000 SF Available
- ✓ 60,599 SF Property
- ✓ Turn key options
- ✓ Fresh paint and carpet
- ✓ Traffic Count 38,000 VPD
- ✓ Ample Free Parking
- ✓ Recent Common Area Improvements
- ✓ Smaller Office Suites
- ✓ New Ownership
- ✓ Exceptional Location

ADAM RATH | BROKER  
ADAM@RATHEQUITY.COM  
513.888.8669  
RATHEQUITY.COM

**RE**  
RATH EQUITY, LTD.

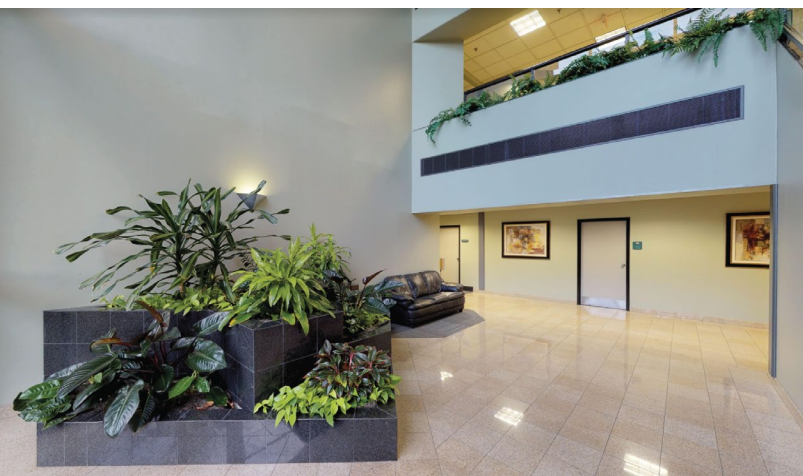












## LOCATION

Address	10700 Montgomery Road
Building Size	60,599 SF
Parking	4/1,000
Site Size	4.86 Acres
Access	Minutes to I-71 and I-275

## FEATURES

Ceiling Heights	9'7"
Lighting	Fluorescent
Flooring	Carpet and Tile
Windows	Single Pane
Year Build	1980; Recently Renovated
Number of Floors	3 (Three) Floors
Elevators	2 (Two) Elevators

## UTILITIES

Electric	Duke Energy
Water/Sewer	City of Montgomery
Phone/Data	Cincinnati Bell & Time Warner (Spectrum)

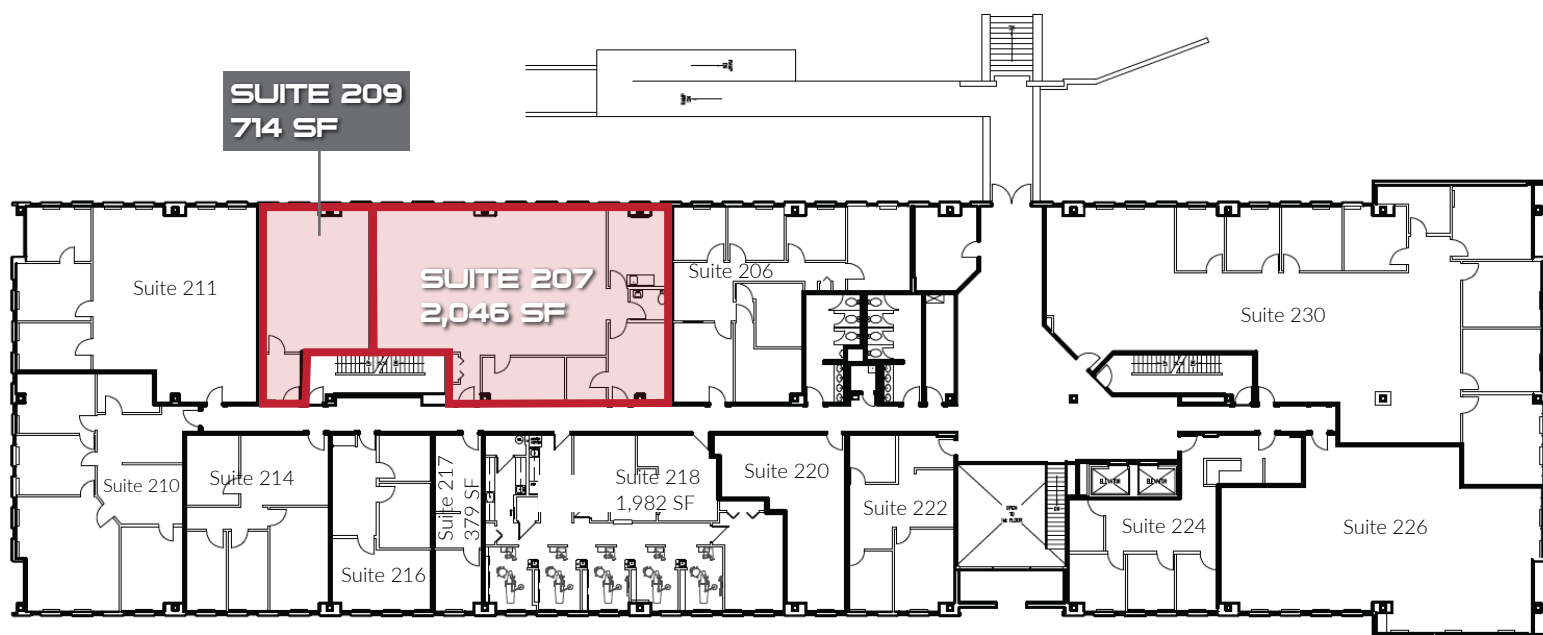
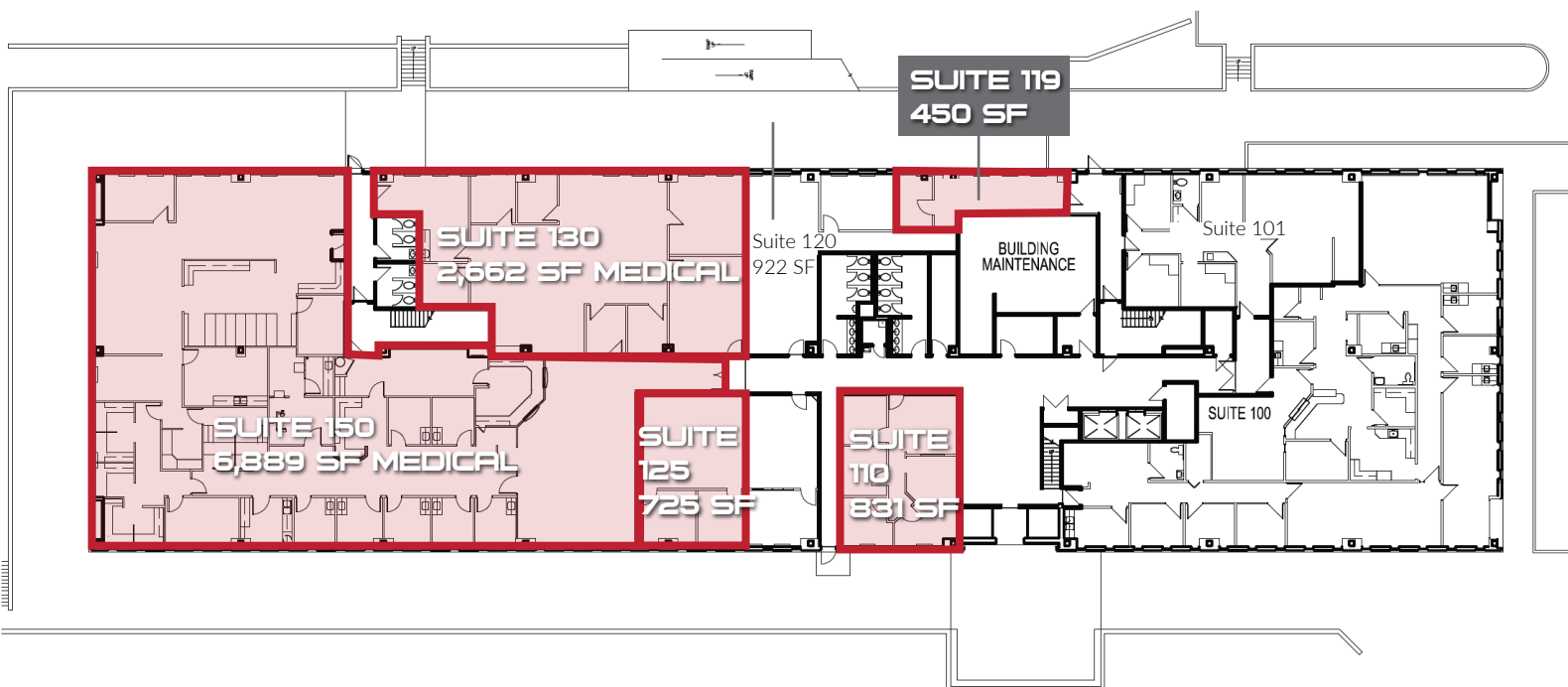
## ZONING

Municipality	City of Montgomery
Income Tax Rate	1%

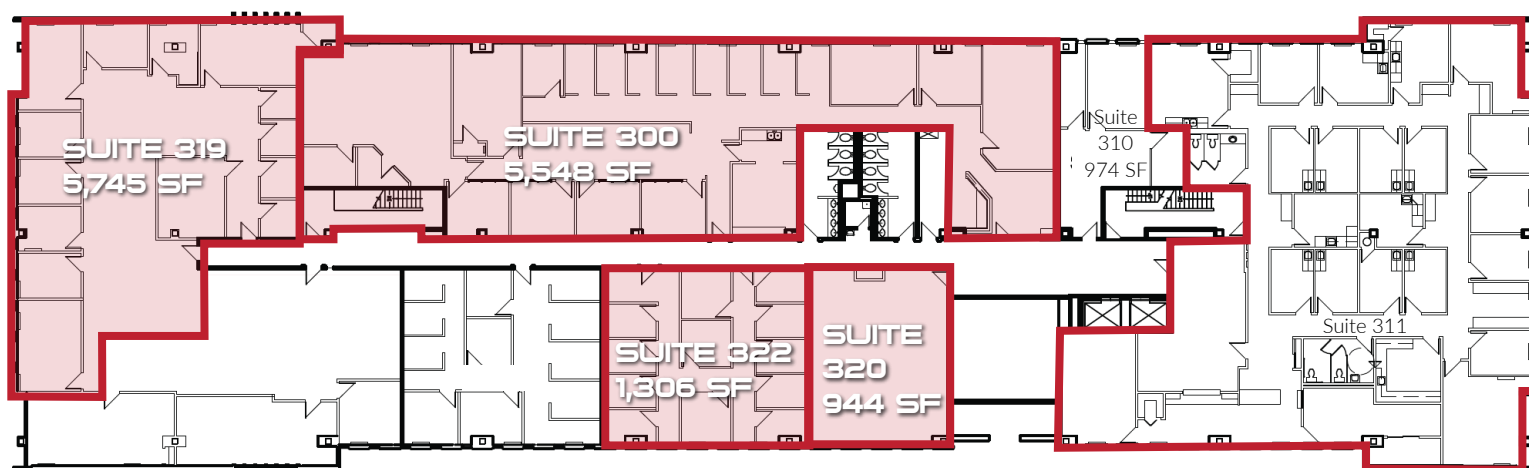
## BUILDING SYSTEMS

HVAC	Rooftop Units with Air Handlers
Sprinkler System	Wet



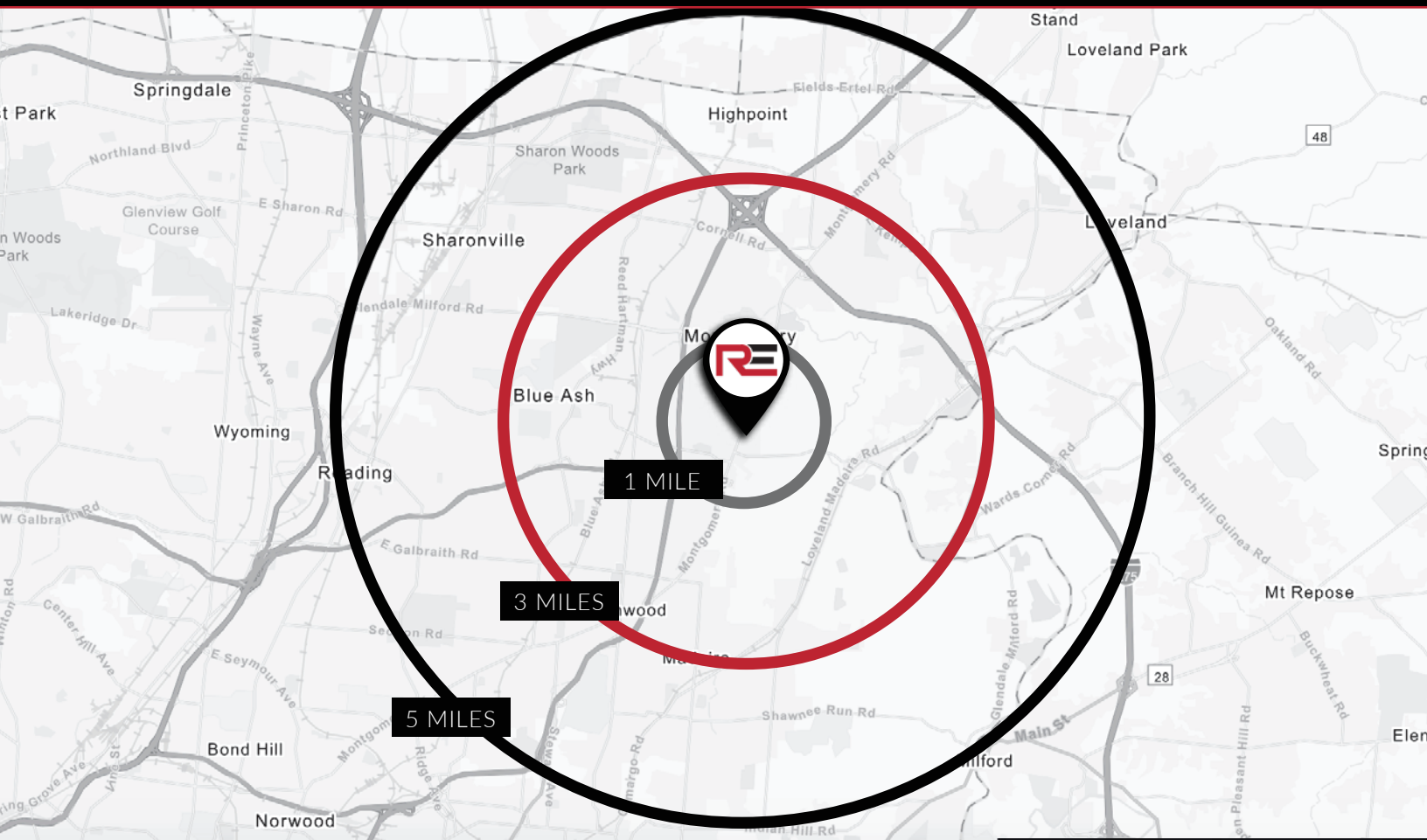


MAX CONTIGUOUS: 22,620 SF



3RD FLOOR RENDERING





2020 SUMMARY	1 MILE	3 MILES	5 MILES
Population	5,361	46,637	129,565
Households	2,129	19,234	54,147
Families	1,525	12,795	34,970
Average Household Size	2.44	2.40	2.36
Owner Occupied Housing Units	1,744	13,639	37,444
Renter Occupied Housing Units	385	5,595	16,703
Median Age	50.3	45.0	44.2
Median Household Income	\$121,110	\$88,103	\$81,116
Average Household Income	\$181,725	\$131,369	\$118,931

2025 SUMMARY	1 MILE	3 MILES	5 MILES
Population	5,354	47,562	131,324
Households	2,135	19,731	55,084
Families	1,521	13,031	35,350
Average Household Size	2.43	2.38	2.36
Owner Occupied Housing Units	1,746	13,650	37,582
Renter Occupied Housing Units	388	6,081	17,502
Median Age	51.1	45.2	44.7
Median Household Income	\$130,326	\$94,432	\$86,542
Average Household Income	\$200,419	\$143,574	\$130,187

